

# TAMTRON

WEIGH TO KNOW



## ONE TIMBER CRANE SCALE

**LOAD ACCURATELY EVERY TIME**

Underloading i.e. not maximizing the loadable amount of trucks and trailers is bad business and overloading can result in fines. Eliminate these mistakes with the One Timber scale. You can rely that the loaded amount is in line with the vehicle and road legal limits. Make sure all vehicles are loaded correctly the first time. Do not waste time by having trucks drive to the truck scale to confirm loaded weight. Productivity increases when unnecessary trips can be avoided.

Tamtron's One Timber scale is easy to use and designed for fast-paced loading up to capacity of 10t.

- ▶ Easy to install and to use
- ▶ 24/7 real-time data transfer from scale to PC
- ▶ Machine operator's loading style does not affect the weighing result
- ▶ Robust design for all conditions



# POSSIBILITIES FOR MORE PROFITABLE TIMBER BUSINESS

## INNOVATIVE DISPLAY, STRAIN GAUGE WEIGHING LINK

The One Timber scale combines the innovative features of the Tamtron One display and our new generation strain gauge weighing link. The scale functions wirelessly between the weighing link and Tamtron One display. Installation is quick and the scale is operational in no time. Tamtron's One Timber scale is ideal for vigorous use and round-the-clock operations where precision is the cornerstone of the job. As a solution that requires little maintenance, the One Timber scale is intended for severe and harsh working conditions where changing temperature and humidity readings are the norm.



## TAMTRON ONE DISPLAY SPECIFICATIONS

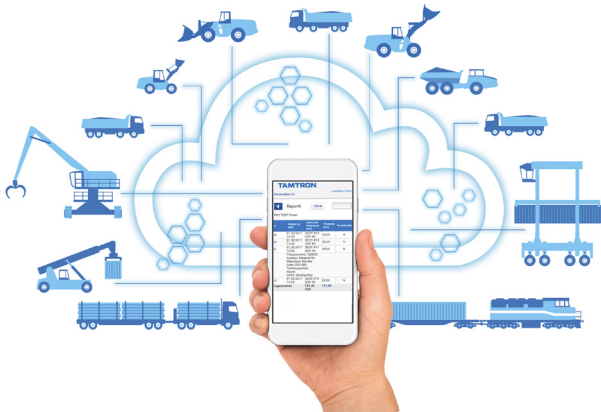
- ▶ Dimensions 205x144x45 mm w/o mount
- ▶ Weight 1 kg (with mount)
- ▶ Operating Voltage 12/24VDC
- ▶ 7" 800x480 TFT LCD with capacitive touch panel
- ▶ 2xCAN (1xCAN with 12VDC power output)
- ▶ Analog composite video input
- ▶ 1xRS232 for printer with 24VDC power output
- ▶ 2xUSB 2.0
- ▶ 2G/3G/4G mobile data
- ▶ Wi-Fi 802.11b/g
- ▶ Bluetooth 4.1
- ▶ GPS/GLONASS
- ▶ Absolute orientation sensor
- ▶ Internal buzzer
- ▶ Digital I/O (3xDigital in, 1xDigital out, 1xPWM out)
- ▶ IP 67
- ▶ Operating temperature -25 - +50 °C



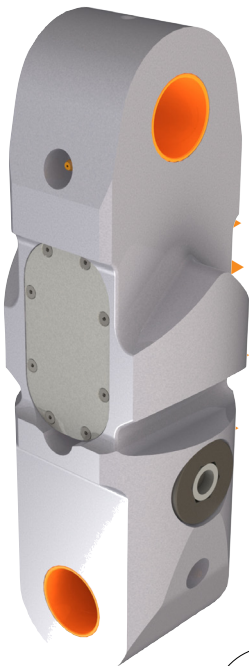
# WEIGHING INFORMATION IN YOUR POCKET 24/7

## TAMTRON'S CLOUD SERVICE — ONE CLOUD

With the One Cloud service, weighing information is available for use and distribution to various parties within the company and with stakeholders. By capturing and managing the weighing data, you will increase the efficiency of the company's operations. The weighing information is transferred electronically from the scale to the cloud.

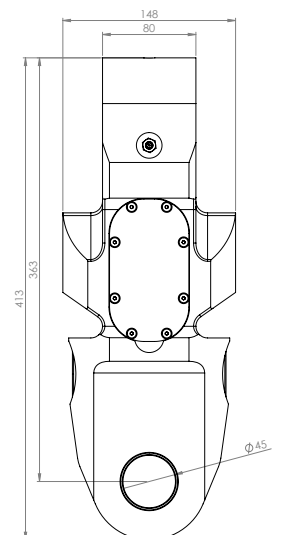
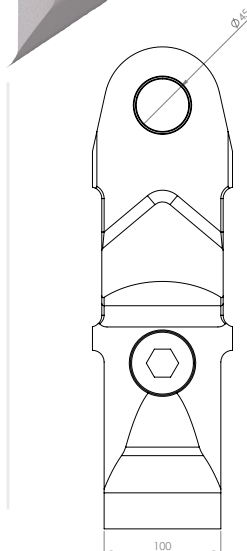


- ▶ The cloud service is data secure and easy to use
- ▶ Through the One Cloud service, you can send orders directly to the scale
- ▶ The weighing information can be accessed anywhere, 24 hours a day



## TECHNICAL SPECIFICATION ONE TIMBER SG WEIGHING LINK

- Weight: 26 kg
- Wireless data transfer
- Li-ion rechargeable battery
- Surface treatment: zinc plated (blue passivation)
- Heavy duty bushing material







## ACCURATE LOADING, EFFECTIVE WORKING

With reliable and accurate weighing information, you gain the benefits of a faster work flow, more transparent trade and business, and significant cost savings. The reporting and analysis features enable you to facilitate invoicing and expedite work.

Accurate loads mean that the vehicles are loaded to their recommended capacity diminishing both deficient loads as well as overloads. The vehicle's location is known 24/7 and you send the loading orders directly to the scale.

The scale is effective as the operator has no need to leave the cabin after loading or drive backwards and forwards to stationary truck scales for check up weighings. Operators themselves can maintain the scale if necessary and their individual loading styles have no effect on the scale's accuracy.

The scale's updates are automatic, and diagnostics and support is available remotely.

## EXPERTISE FOR OVER 40 YEARS

Tamtron is the global market leader of weighing solutions for the forestry segment. One Timber scale is a comprehensive weighing solution that provides our customers with what they demand and need in their business.

### INCLUDED IN THE DELIVERY

- Scale instrument
- Weighing link (including receiver and battery)
- Cable set (including summing button)
- Back-up battery
- Battery charger
- Battery tool

### OPTIONS

- 2" Bluetooth mobile printer
- Cradle for printer
- Thermal paper roll for printer
- Rechargeable battery for weighing link
- Battery charger, universal voltage
- Protective cover for display unit
- Foot pedal
- External buzzer

# TAMTRON

P.O. Box 15 (Vestonkatu 11)  
FI-33561 Tampere  
Finland

Tel. +358 3 3143 5000  
weighing@tamtron.fi

[WWW.TAMTRONGROUP.COM](http://WWW.TAMTRONGROUP.COM)

Tamtron is an advanced product manufacturer and weighing information management service provider in the weighing industry that is committed to high-quality and responsible service. The company's success is based on the ability to produce some of the most innovative and competitive weighing solutions in the industry. The weighing solutions provided by Tamtron make customers' everyday operations easier and more efficient in all significant industries such as recycling and waste management, forestry and wood processing, manufacturing, harbours, construction and mining, and transportation and logistics. The company's ISO 9001:2015 quality certified know-how ensures high-quality deliveries.

The internationally operating company has a turnover of EUR 22 million, and the group employs 140 professionals. The company's main office is in Finland, and it has subsidiaries in Sweden, Poland, Germany, the Czech Republic and Slovakia. In addition to strong domestic trade, Tamtron exports its products globally to more than 60 countries. Tamtron is a reliable partner for demanding weighing solutions with more than 40 years of experience.