

# REK-MOUNTING KITS

FOR RC2 LOAD CELLS 1 t ... 470 t



- The key to high-precision performance in industrial weighing

Mounting kits designed specially for RC2 load cells are an ideal solution for very precise and reliable industrial weighing and dosing. The mounting kit eliminates changes in measures due to loading and thermal expansion, process equipment-generated lateral forces and vibrations, otherwise prone to affect the measuring results.

The right mounting kit ensures the best performance of the load cell.



## REK MOUNTING KITS FOR RC2 LOAD CELL IN THE RANGE FROM 1 t TO 470 t

### REK 1 t ... 470 t

#### Elastomer mounting kits

- Easy installation
- Self-centering construction
- High resistance to chemicals
- Minimum maintenance needs
- For tough environmental conditions
- Suitable for commercial use

RC2 load cell in REK mounting kit is the most common solution in tank and silo weighing as well as in weighbridges. The rubber parts of the mounting kit take and absorb the shock loads and vibration. The mounting kit offsets bending in structures due to loads, minor mistakes in mounting and thermal expansion. The construction allows differences in levels for upper and lower fastening faces up to 10 mm/m (= 0.6°).

The construction self-centering force is 2...4 % of the mounting kit nominal load L, with maximum lateral deviation (measure P). The mounting kit is delivered with shims (5 x 1 mm) for correcting possible differences in levels at mounting site.

Lahti Precision also supplies mounting kits with horizontal and vertical constrainers to take large lateral or upward forces affecting the weighbridge. These mounting kits are used in truck scales, in silo weighing outside as well as in mixers.

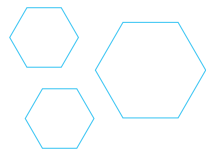
The right mounting kit ensures the optimal weighing accuracy and safe performance of the system also in tough conditions.



REK 1 t...4,7 t



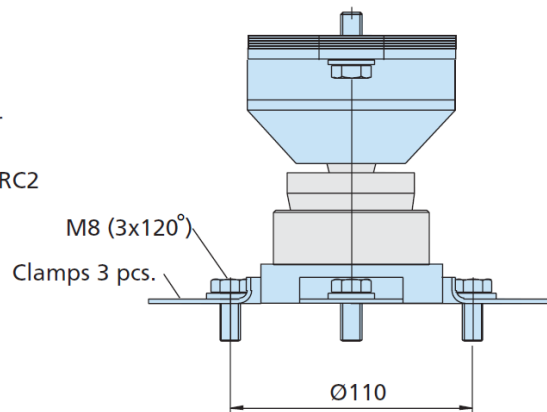
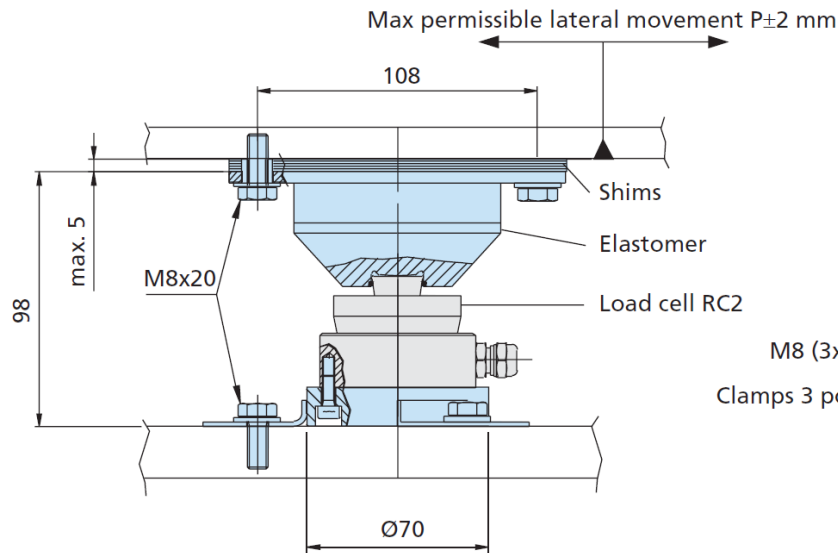
REK 10 t...470 t



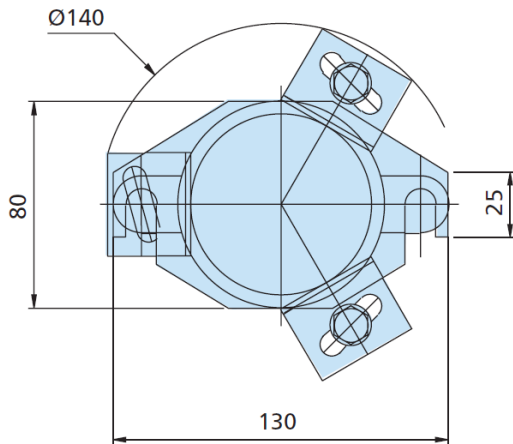
## TECHNICAL SPECIFICATION AND DIMENSIONS, REK-002 AND REK-005

Mounting kit REK-002 for load cells RC2 – 1 t and RC2 – 2.2 t

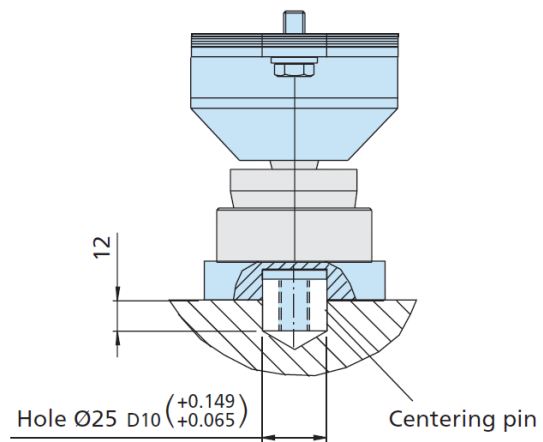
Mounting kit REK-005 for load cells RC2 – 4.7 t



Fixing alternative by clamps



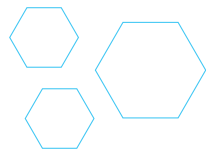
Construction: stainless steel/rubber



Fixing alternative by a centering pin

| Mounting kit | Nominal load L | Corresponding load cell<br>(to be ordered separately) | Centering force $F_k$ | Compression  | Weight |
|--------------|----------------|---|-----------------------|--------------|--------|
| REK-002-S    | 1 t            | RC2 – 1 t   | 0,2 kN/mm             | 0,4 mm/1 t   | 4,8 kg |
|              | 2,2 t          | RC2 – 2,2 t   | 0,2 kN/mm             | 0,8 mm/2,2 t | 4,8 kg |
| REK-005-S    | 4,7 t          | RC2 – 4,7 t   | 0,4 kN/mm             | 0,6 mm/4,7 t | 4,8 kg |



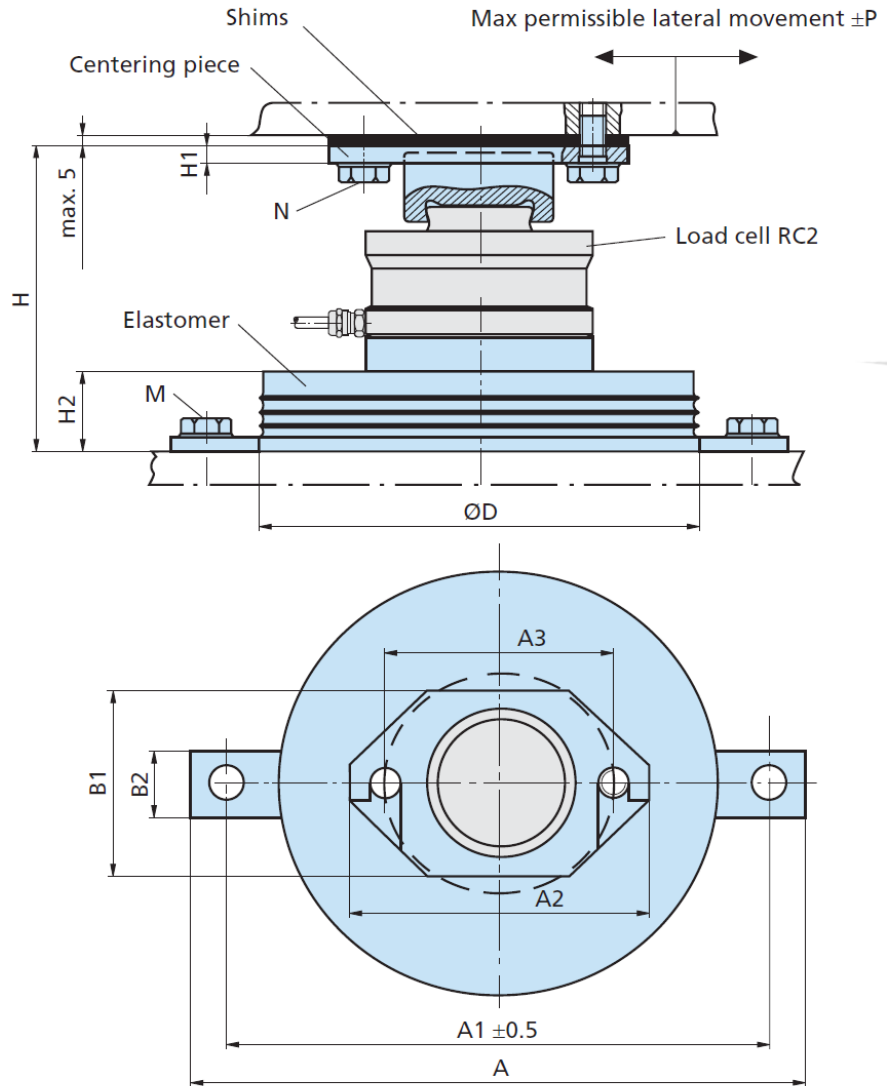


## TECHNICAL SPECIFICATION AND DIMENSIONS, REK-022 ... REK-470

**Mounting kit  
REK-022...REK-470  
for load cells  
RC2 – 10 t...470 t**

| Mounting kit | Corresponding load cell (to be ordered separately) |
|--------------|--|
| REK-022-S    | RC2 – 10 t   |
| REK-022-G    | RC2 – 15 t<br>RC2 – 22 t                           |
| REK-033-G    | RC2 – 33 t   |
| REK-047-G    | RC2 – 47 t   |
| REK-068-G    | RC2 – 68 t   |
| REK-100-G    | RC2 – 100 t  |
| REK-150-G    | RC2 – 150 t  |
| REK-220-G    | RC2 – 220 t  |
| REK-330-G    | RC2 – 330 t  |
| REK-470-G    | RC2 – 470 t  |

S = Stainless steel (only size 022)  
G = Galvanized steel



| REK | Nominal load L (t) | Mounting dimensions mm |     |     |     |     |    |     |    |     |     |       |       |    | Centering force $F_k$ kN/mm | Compression mm | Weight kg |
|-----|--------------------|------------------------|-----|-----|-----|-----|----|-----|----|-----|-----|-------|-------|----|-----------------------------|----------------|-----------|
|     |                    | A                      | A1  | A2  | A3  | B1  | B2 | H   | H1 | H2  | D   | M     | N     | P  |                             |                |           |
| 022 | 22                 | 190                    | 170 | 90  | 68  | 60  | 25 | 130 | 6  | 41  | 135 | 10x25 | 10x25 | 6  | 1,4                         | 0,5            | 7         |
| 033 | 33                 | 280                    | 250 | 120 | 90  | 80  | 30 | 168 | 6  | 56  | 175 | 12x25 | 12x25 | 6  | 2,0                         | 0,8            | 22        |
| 047 | 47                 | 350                    | 310 | 170 | 130 | 110 | 40 | 198 | 10 | 63  | 250 | 16x30 | 16x30 | 6  | 3,3                         | 0,5            | 33        |
| 068 | 68                 | 350                    | 310 | 170 | 130 | 110 | 40 | 220 | 10 | 63  | 250 | 16x30 | 16x30 | 6  | 3,3                         | 0,7            | 35        |
| 100 | 100                | 400                    | 360 | 180 | 140 | 130 | 40 | 239 | 10 | 68  | 300 | 16x30 | 16x30 | 6  | 4,0                         | 0,6            | 50        |
| 150 | 150                | 510                    | 460 | 180 | 140 | 130 | 50 | 320 | 10 | 81  | 400 | 20x45 | 16x30 | 8  | 6,7                         | 0,7            | 115       |
| 220 | 220                | 560                    | 510 | 260 | 200 | 180 | 50 | 373 | 12 | 81  | 450 | 20x45 | 20x45 | 8  | 10                          | 0,7            | 200       |
| 330 | 330                | 680                    | 620 | 260 | 200 | 180 | 60 | 428 | 12 | 96  | 550 | 24x40 | 24x40 | 10 | 6,7                         | 1,0            | 330       |
| 470 | 470                | 780                    | 720 | 320 | 240 | 220 | 60 | 520 | 12 | 115 | 650 | 24x40 | 24x40 | 13 | 6,7                         | 1,5            | 600       |

Weight incl. load cell.

