

WA-800 PRODUCT FAMILY

TECHNICAL SPECIFICATIONS



INDICATORS

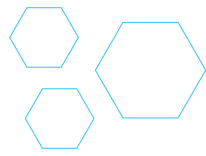
- WA-802
- WA-810

CONTROLLERS

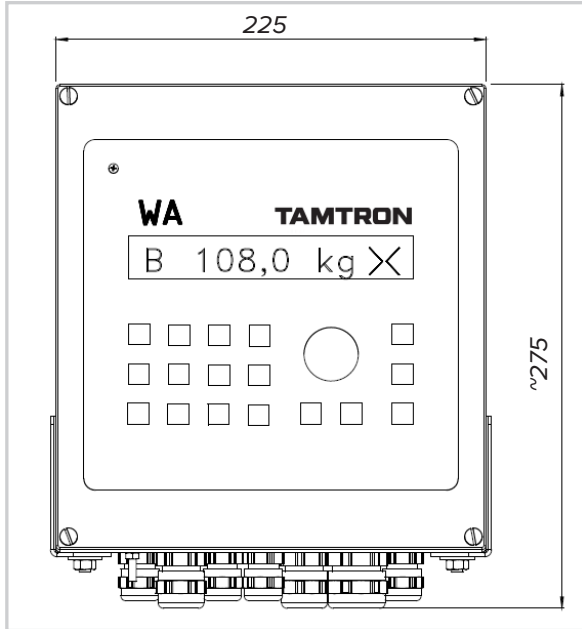
- WA-804
- WA-805
- WA-806
- WA-807



WA-800 PRODUCT FAMILY



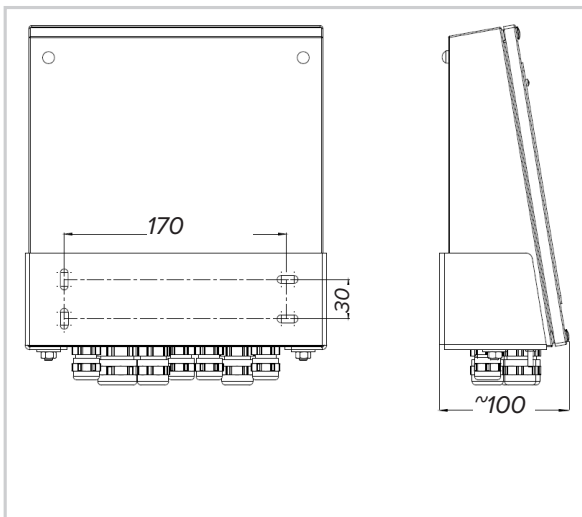
SYSTEM DIMENSIONS



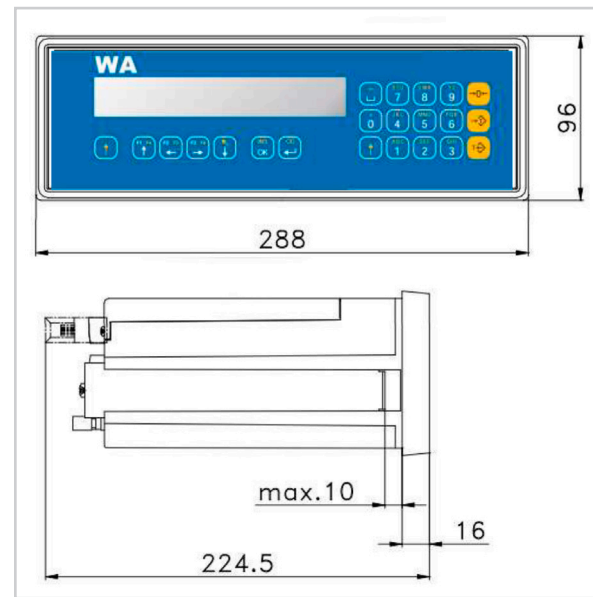
WA-802...WA-807: System dimensions

The WA-800 is a complete weighing indicator for a variety of applications.

The WA-800 Product Family offers two housing options, which include a tabletop device and a wall-mounted device both in stainless steel design. The protection class of these devices are IP65.



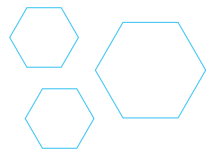
WA-802...WA-807: Wall mounting



WA-802...WA-807 panel mount dimensions



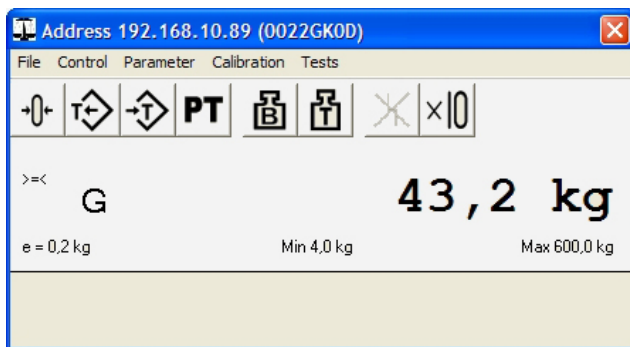
WA-800 PRODUCT FAMILY



WA-PLAN

OPERATING SYSTEMS

The WA-plan Windows program is available for conveniently configuring and parametering the WA-800 Product family scales.



FOLLOWING OPERATIONS CAN BE CONFIGURED WITH WA-PLAN

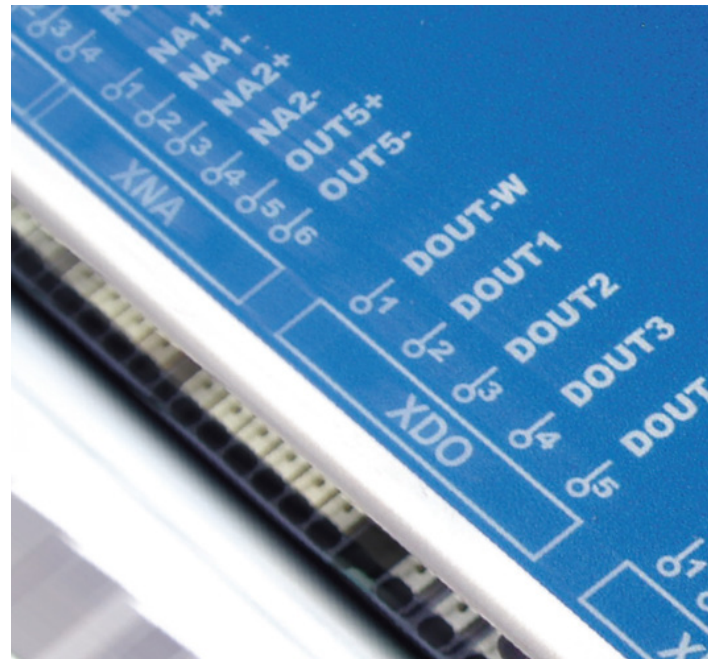
- Assign subscriber addresses to the serial bus
- Calibrate the instrument
- Configure interfaced instruments
- Conveniently configure the print pattern
- Read-out and display of weight signals
- Edit and load the language files into WA-800
- Read out the entire system configuration (back-up) and store in the PC
- Load stored data into a WA-800 (restore) for fast substitute system set-up.

LANGUAGES

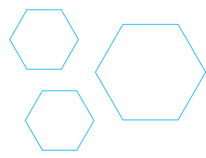
Standard WA-800 operation is in Finnish and English. All operator guidance is carried out and data is entered in clear text.

PARAMETER STORING

All parameter and calibration data are stored power failure safe in the instrument. The real-time clock runs at least 7 days without a power supply.



WA-800 PRODUCT FAMILY

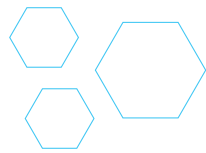


WEIGHT INDICATORS AND CONTROLLERS TECHNICAL DATA

	WA-802 WA-804 - 807		WA-810
Display	LCD with backlight, 1 row 20 characters, character height 12mm		
Keyboard	21 keys		6 keys
Supply voltage	85-250 VAC, 47-63 Hz, max. 10 VA		85-250 VAC, 47-63 Hz, max. 10 VA
Temperature range	Operating temperature: -30 to +60 °C, storage: -40 to +80 °C Legal for trade operating temperature: -20 to +40 °C		
Measuring channels	1		
Load cell supply	5 VAC		
Input signal	0 to 15 mV		-20 mV...+20 mV
Sensitivity	0,6 µV/d		
Measuring units	kg, g, t, lb, N, kN		kg/h, t/h, lb/h
Increment value	1, 2 and 5, etc. adjustable from 0.01 - 5000		
Number of digits	Legal-for-trade operation (EN45501, OIML III) Max. 6000 d Multi-range scale 3 x 6000 d, Multi-interval scale 3 x 6000 d No limitation to resolution in non legal-for-trade operation		
Taring	To 100 % of the weighing range		
Zero setting device	Can be set max. 20%. Automatic zero tracking 0.5 d/sec, can be selected; automatic zero setting can be selected		
Load cell impedance	Min 43 Ω (8 x 350 Ω load cell) Max. 4500 Ω		
Date/time	Real time clock (RTC), Back-up time at least 7 days		
Housing	Stainless steel 1.4301; Protection class IP65, suitable for desktop and wall mounting	Plastic; Protection class IP54, suitable for panel mounting	Stainless steel 1.4301; Protection class IP65, suitable for desktop and wall mounting
Digital inputs	4 x optocoupler, 18 - 36 VDC, typ. 5 mA		WA-802 inputs + 1 x NAMUR, max. 5 VDC, 0.04-3000Hz
Digital outputs	4 x relay, 50 VAC/30 VDC, max. 60 W		WA-802 outputs + 1 x optocoupler, 18 - 36 VDC, max. 50 mA
Analog output	1 x 0(4) – 20 mA, 12 Bit, max. load 500 Ω		
Ethernet interface	10/100 Mbit/s, integrated		
Standard fieldbus interfaces	Modbus RTU, Modbus TCP		
Optional fieldbus interfaces	Profibus DP-V0, Profinet IO, DeviceNet, Ethernet/IP		
Serial interfaces	2 x RS-232, 1 x RS-485 2/4 wire		1 x RS-485 2/4 wire
EDP protocols	Siemens 3964R, S5 (RK512), DDP8672, DDP8785, MODBUS, SB03, Minproz		-
USB interface	Integrated, for PC keyboard		-



WA-800 PRODUCT FAMILY



WEIGHT INDICATORS AND CONTROLLERS TECHNICAL DATA

Devices	
WA-802 Weight Indicator	Advanced Weighing Solutions
WA-804 Totalizing Scale Controller	Receiving and Load-out Scales
WA-805 Filling Scale Controller	Automatic Filling Scale Applications
WA-806 Discharge Scale Controller	Automatic Discharge Scale Applications
WA-807 Catch Weighing Controller	Automatic Check Weighers
WA-810 Totalizing Belt Scale Indicator	Stand Alone Belt Weighers

Options
Profibus interface module
Profinet interface module
DeviceNet interface module
PC keyboard (USB)
Legal-for-trade memory module

