

6116EVO

"6116EVO" Industrial touch screen PC with integrated scale input



New industrial touch screen PC with an AISI 304 stainless steel case and IP67 protection degree, specifically for harsh industrial environments. It allows the loading of any weighing programme developed on Windows 10, for the creation of advanced weighing systems. High-performance Intel processor and up to 4 scale inputs.

Working in cooperation with:

TAMTRON AS

VESTVOLLVEIEN 30B - 2019 - SKEDSMOKORSET - NORWAY
Tél. +47 64 83 67 50
post@tamtron.no www.tamtron.no

**The best solution
for advanced industrial
applications**

THE NEW FRONTIER OF INDUSTRIAL PCS FOR AUTOMATION

- 6116EVO is the new version of the Dini Argeo industrial PC, designed for harsh industrial environments and equipped with a capacitive touch screen, ideal for precise point-of-contact detection, even with gloves and in the presence of water/condensation.
- 6116EVO guarantees high performance, thanks to the latest Intel 4-core processor, and is available with integrated weighing electronics to manage up to 4 scales.
- Thanks to the D-LEGAL software, it is also possible to create applications approved for use with third parties and to further simplify data exchange with external programmes.

DISCOVER OUR NEW PC SOFTWARE SOLUTIONS!



With more than 30 years of successful development and installations, the [Myrias](#) software has multiple modules that combine to create different solutions:

- Dynamic Checkweigher
- Truck Scale & Axle Weigher
- Manual Checkweigher
- Offline sampling
- Pallet weighing
- Traceability
- Recipe
- Data Manager
- Belt weighing
- Stock Control.

PC TECHNICAL CHARACTERISTICS

- High-performance Intel 4-core processor.
- Windows 10 IoT operating system preinstalled in English (other languages downloadable free of charge).
- Capacitive touch screen display, suitable for use with gloves and in the presence of water/condensation.
- Size 10.1", resolution 1280x800 px, high brightness (800 Nits).
- Ram 8GB DDR3L.
- Data storage SSD mSATA 64GB.
- Fanless technology, without cooling fans.
- AISI304 stainless steel enclosure with adjustable tilt.
- Standard ergonomic bracket for use on a bench or wall mounting.
- VESA mount for all versions.
- Industrial communication ports with IP67 protection.
- IP67 stainless steel valve for regulating humidity and pressure inside the case.
- IP67 overall protection rating.
- Working temperature: 0°/+60°C, 0°/+40°C for third-party applications.
- Dimensions (l x h x w): 375x327x65 mm.
- Power supply: 110/240 Vac.

AVAILABLE INPUTS/OUTPUTS

| | <i>6116EVO-1</i> | <i>6116EVO4X</i> | <i>6116EVO4XKB</i> |
|--|------------------|------------------|--------------------|
| Internal USB 3.1 Type A ports | 2 | 1 | 1 |
| Panel USB 2.0 ports | 2 | 2 | 2 |
| Internal Gigabit Ethernet port, 10/100/1000 Mbps | 1 | 1 | 1 |
| Gigabit-Ethernet RJ45 panel port, 10/100/1000 Mbpps | 1 | 1 | 1 |
| Internal VGA port | 1 | 1 | 1 |
| Internal HDMI port | 1 | 1 | 1 |
| Audio IN | 1 | 1 | 1 |
| Audio OUT | 1 | 1 | 1 |
| Digital inputs | 1 | 2 | 2 |
| Digital outputs | 0 | 2 | 2 |
| Scale inputs | 0 | 4 | 4 |

INTEGRATED MULTI-BALANCE WEIGHING ELECTRONICS, APPROVABLE (6116EVO4X and 6116EVO4XKB)

- Thanks to the integrated multi-channel weighing electronics, it is possible to:
 - > read the weight of one or more scales, up to 4
 - > connect up to 4 load cells and read the equalised weight, in "digital junction box" mode.
- Connectable load cells (via junction box): up to 16 of 350 Ω
- Selectable sampling rate up to 2600Hz single-channel, 200Hz two-channel or 90Hz three- to four-channel
- With D-LEGAL approved software, the 6116EVO can be approved for legal-for-trade-approved applications.

OPTIONAL VIRTUAL ALIBI MEMORY AND API FOR DEVELOPMENT OF APPROVED PROGRAMMES

- 6116EVO has two optional programmes, designed to facilitate communication with the integrated weighing electronics via APIs and the saving of weighings, including those approved for legal-for-trade-use:
 - D-API: Software for internal use for saving weighs and API libraries (cannot be combined with AF6116)
 - D-LEGAL: Approved software for saving weighings and API libraries (cannot be combined with AF6116)
- Click [here](#) for more information.

OPTIONAL APPLICATION PROGRAMME 'AF6116' (ONLY FOR 6116EVO4X AND 6116EVO4XKB)

- The AF6116 program is an optional application specific for 6116EVO4X AND 6116EVO4XKB that includes the main AF programs (AF01 - Totalization; AF02 - Piece/quantity counting; AF03 - Input/output vehicles; AF04 - statistical checking of prepacked goods; AF05 - Industrial labelling; selectable from the settings menu) with some important additional features and extensions:
 - 1) The programme allows the USB or ETHERNET ports of the PC to be used to emulate the operation of the 3590's COM PC, COM PRN and COM AUX
 - 2) Weighing saving: the saving functions on USB key and SD memory available on the 3590 are replicated on 2 memory allocations of 64Mb, with the possibility of exporting the weighings to the desired folder, including network.
 - 3) More free texts, up to 100 records available.
 - 4) Larger databases, up to 10 000 records per database available.
 - 5) Database management via SQL (read and write)

OTHER OPTIONS:

- 15', 17', 19' and 21,5' versions (available upon quotation)
- Numeric or alphanumeric weight repeater
- Provision for metric approval (only with integrated weight transmitter)

DETAIL 1



DETAIL 2



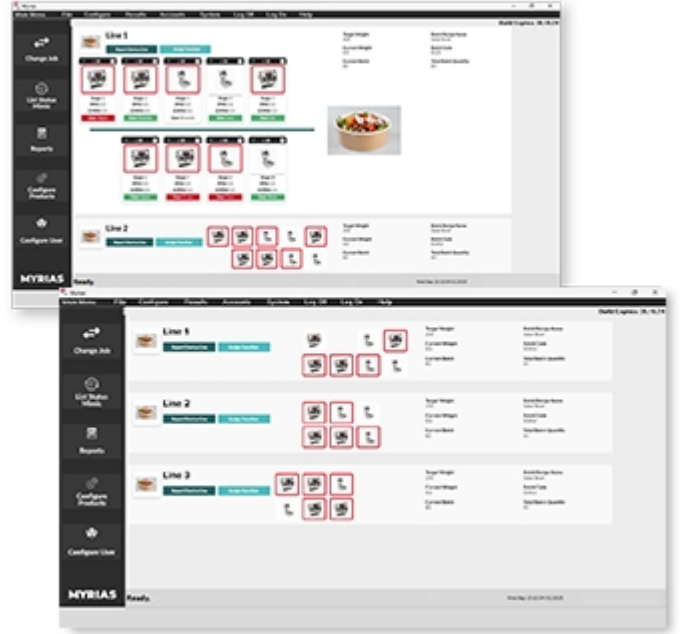
DETAIL 3



6116EVO4XKB

6116EVO4XKB version

DETAIL 4



“YOUR WORLDWIDE PARTNER FOR WEIGHING”

DINI ARGEO
FRANCE sarl
France

DINI ARGEO
GMBH
Germany

DINI ARGEO
UK Ltd
United Kingdom

DINI ARGEO WEIGHING
INSTRUMENTS Ltd
China

DINI ARGEO
OCEANIA
Australia



COMPANY HEADQUARTERS

Via Della Fisica, 20
41042 Spezzano di Fiorano - Modena - Italy
Tel. +39.0536 843418

TAMTRON AS

VESTVOLLVEIEN 30B - 2019 - SKEDSMOKORSET - NORWAY

Tel. +47 64 83 67 50

post@tamtron.no www.tamtron.no

SALES AND TECHNICAL ASSISTANCE SERVICE