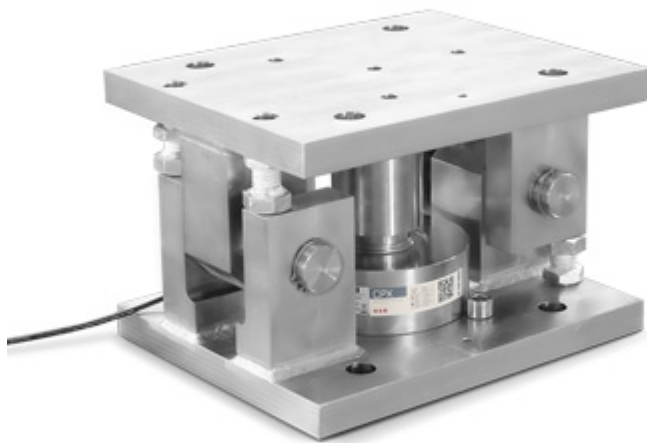


KCP100H

"KCP100H" mounting kit for CPX compression load cells up to 100t



KCP100H is an accessory designed for the correct mounting and operation of CPX series compression load cells below large capacity silos, both horizontal and vertical, in indoor or outdoor environments (up to 100t per support point).

KCP100H offers high protection against overloads and side forces and actively contributes to protection against accidental overturning of the silo.

Available in EN 1090 certified version.

Working in cooperation with:

TAMTRON AS

VESTVOLLVEIEN 30B - 2019 - SKEDSMOKORSET - NORWAY
Tel. +47 64 83 67 50
post@tamtron.no www.tamtron.no

**The best solution
for advanced industrial
applications**

TECHNICAL FEATURES

- Designed for mounting 50 and 100t CPX cells
- Galvanized steel construction (stainless steel by quote)
- High resistance to tipping, up to 400KN
- Self-aligning joint designed to allow mechanical expansion of the structure while maintaining weighing accuracy.
- Locking screws and bypass for completely safe load cell maintenance.
- Total weight of the kit (without load cell): 90kg

	Protection	Force (KN)
↑↓	Max lift-off force	400
↔	Max side force	200

“YOUR WORLDWIDE PARTNER FOR WEIGHING”

DINI ARGEO
FRANCE sarl
France

DINI ARGEO
GMBH
Germany

DINI ARGEO
UK Ltd
United Kingdom

DINI ARGEO WEIGHING
INSTRUMENTS Ltd
China

DINI ARGEO
OCEANIA
Australia



COMPANY HEADQUARTERS

Via Della Fisica, 20
41042 Spezzano di Fiorano - Modena - Italy
Tel. +39.0536 843418

TAMTRON AS

VESTVOLLVEIEN 30B - 2019 - SKEDSMOKORSET - NORWAY

Tel. +47 64 83 67 50

post@tamtron.no www.tamtron.no

SALES AND TECHNICAL ASSISTANCE SERVICE