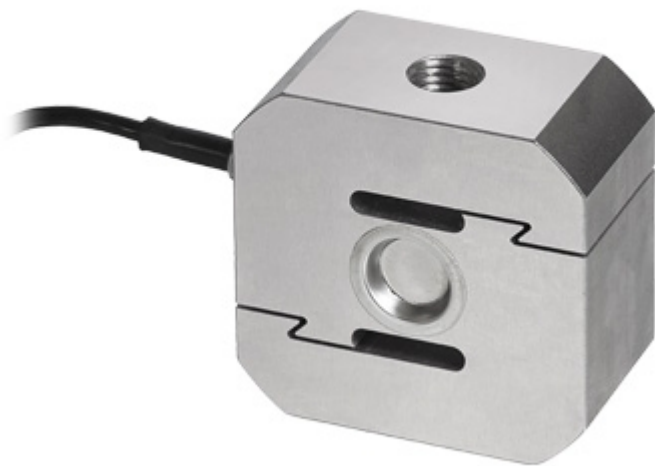


STFC

STFC SERIES TENSION LOAD CELLS



Tension load cells CE-M approved for suspended weighing of hoppers, tanks, etc.

CAPACITIES (kg): 2000, 5000, 10000.

OIML R60. C3 precision class.

Nickel-plated steel. **IP67** protection.

Working in cooperation with:

TAMTRON AS

VESTVOLLVEIEN 30B - 2019 - SKEDSMOKORSET - NORWAY

Tel. +47 64 83 67 50

post@tamtron.no www.tamtron.no

The best solution
for advanced industrial
applications

MAIN FEATURES

- C3 PRECISION CLASS
- NICKEL-PLATED STEEL CONSTRUCTION
- IP67 PROTECTION LEVEL
- MAX. CAPACITIES FROM 2000 TO 10000 kg
- SHIELDED CONNECTION CABLE
- TEST CERTIFICATE AVAILABLE UPON REQUEST

TECHNICAL FEATURES

- Minimum load cell verification interval: $V_{min} = E_{Max} / 10.000$
- Maximum number of verification intervals: $nLC = 3000$
- Combined error: 0,02% of Full Scale Output (F.S.)
- Full Scale Output: 2mV/V +/- 0,1%
- Temperature effect on zero: 0,0013% /°C
- Temperature effect on full scale output: 0,0014% /°C
- Compensated Temperature Range: -10°C/+40°C
- Operating Temperature Range: -20°C/+60°C
- Creep error after 4 hours: 0,03% F.S.
- Maximum tolerated excitation voltage: 10 VDC
- Input Resistance: 1100 Ohm
- Output Resistance: 1000 Ohm
- Zero balance: +/-1% F.S.
- Insulation Resistance: >5000 MOhm
- Safe Overload: 150% F.S.
- Ultimate Overload: 300% F.S.
- 4-wire shielded cable, 5m long, 5mm diameter

Wiring Code




<i>Colour</i>	<i>Function</i>
METAL	SHIELD
GREEN	OUTPUT +
VIOLET	SENSE +
RED	INPUT +
WHITE	OUTPUT -
GREY	SENSE -
BLACK	INPUT -

ATEX VERSION

- The CCATEX certificate makes the load cell suitable for use in hazardous areas with protection methods according to:
ATEX II 1G Ex ia IIC T6 (Ta -20÷+40°C) TX (Ta -20÷+65°C) Ga
ATEX II 1D Ex ta IIIC TX°C (Ta -20÷+40°C) TX°C (Ta -20÷+65°C) Da IP65.
The certificate includes the manual and the ATEX CE conformity declaration (available in EN, DE, FR, and IT).
- **IMPORTANT:** the certificate refers to the single load cell. For systems with more load cells, it is necessary to order one certificate for each load cell.

VERSIONS

Available versions

Codice		Max (kg)
STFC2000		2000
STFC5000		5000
STFC10000		10000

“YOUR WORLDWIDE PARTNER FOR WEIGHING”

DINI ARGEO
FRANCE sarl
France

DINI ARGEO
GMBH
Germany

DINI ARGEO
UK Ltd
United Kingdom

DINI ARGEO WEIGHING
INSTRUMENTS Ltd
China

DINI ARGEO
OCEANIA
Australia



COMPANY HEADQUARTERS

Via Della Fisica, 20
41042 Spezzano di Fiorano - Modena - Italy
Tel. +39.0536 843418

TAMTRON AS

VESTVOLLVEIEN 30B - 2019 - SKEDSMOKORSET - NORWAY

Tel. +47 64 83 67 50

post@tamtron.no www.tamtron.no

SALES AND TECHNICAL ASSISTANCE SERVICE