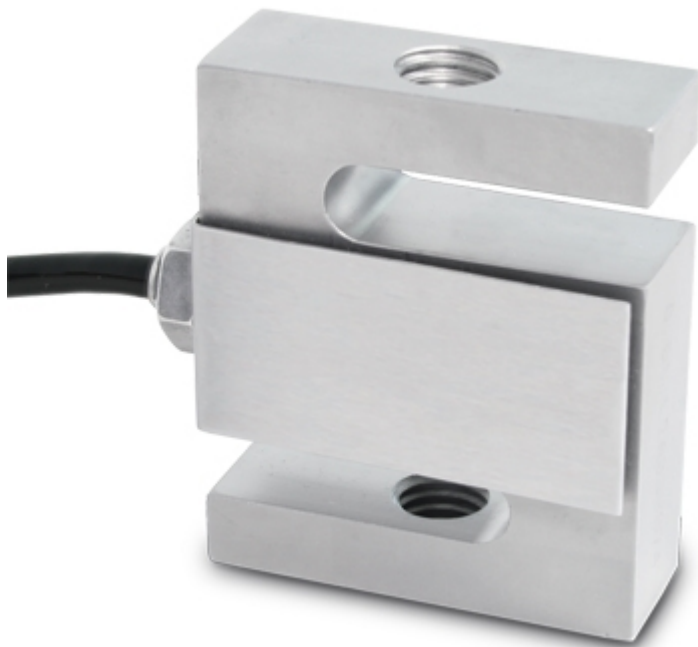


STG

STG SERIES TENSION LOAD CELLS



Tension or Compression approved load cells for the weighing hoppers, tanks, scales with levers, and with other weighing devices.

CAPACITIES (kg): 100, 500, 1000.

OIML R60. C3 precision class.

17-4 PH stainless steel. IP67 protection.

Working in cooperation with:

TAMTRON AS

VESTVOLLVEIEN 30B - 2019 - SKEDSMOKORSET - NORWAY

Tel. +47 64 83 67 50

post@tamtron.no www.tamtron.no

The best solution
for advanced industrial
applications

MAIN FEATURES

- C3 PRECISION CLASS
- 17-4 PH STAINLESS STEEL CONSTRUCTION
- IP67 PROTECTION
- MAX. CAPACITIES FROM 100 TO 1000 kg
- SHIELDED CONNECTION CABLE
- TEST CERTIFICATE AVAILABLE UPON REQUEST

TECHNICAL FEATURES

- Minimum load cell verification interval:
 $V_{min} = E_{Max} / 10.000$ (for STG500 and STG1000 model);
 $V_{min} = E_{Max} / 7.000$ (for STG100 model)
- Maximum number of verification intervals: $n_{LC} = 3000$
- Combined error 0,03% of Full Scale Output (F.S.)
- Non-Repeatability: 0,01% F.S.
- Full Scale Output: 3mV/V +/- 0,08%
- Temperature effect on zero: 0,017% /°C
- Temperature effect on full scale output: 0,014% /°C
- Compensated Temperature Range: -10°C/+40°C
- Operating Temperature Range: -35°C/+65°C
- Creep error after 30 minutes: 0,02% F.S.
- Maximum tolerated excitation voltage: 18 VDC
- Input Resistance: 430 ± 60 Ohm
- Output Resistance: 350 ± 3.5 Ohm
- Zero balance: +/-1% F.S.
- Insulation Resistance: >5000 MOhm
- Safe Overload: 150% F.S.
- Ultimate Overload: 300% F.S.
- 4-wire shielded cable, 6m long, 5 mm diameter

- | <u>Wiring Code</u> | |
|--------------------|-----------------|
| <u>Colour</u> | <u>Function</u> |
| RED | INPUT + |
| BLACK | INPUT - |
| GREEN | OUTPUT + |
| WHITE | OUTPUT - |
| METAL | SHIELD |

ATEX VERSION

- The CCATEX certificate makes the load cell suitable for use in hazardous areas with protection methods according to:
ATEX II 1G Ex ia IIC T6 (Ta -20÷+40°C) TX (Ta -20÷+65°C) Ga
ATEX II 1D Ex ta IIIC TX°C (Ta -20÷+40°C) TX°C (Ta -20÷+65°C) Da IP65.
The certificate includes the manual and the ATEX CE conformity declaration (available in EN, DE, FR, and IT).
- **IMPORTANT:** the certificate refers to the single load cell. For systems with more load cells, it is necessary to order one certificate for each load cell.

DETAIL 1



VERSIONS

Available versions

Codice	Max (kg)
STG100 	100
STG500 	500
STG1000 	1000



“YOUR WORLDWIDE PARTNER FOR WEIGHING”

DINI ARGEO
FRANCE sarl
France

DINI ARGEO
GMBH
Germany

DINI ARGEO
UK Ltd
United Kingdom

DINI ARGEO WEIGHING
INSTRUMENTS Ltd
China

DINI ARGEO
OCEANIA
Australia



COMPANY HEADQUARTERS

Via Della Fisica, 20
41042 Spezzano di Fiorano - Modena - Italy
Tel. +39.0536 843418

TAMTRON AS

VESTVOLLVEIEN 30B - 2019 - SKEDSMOKORSET - NORWAY

Tel. +47 64 83 67 50

post@tamtron.no www.tamtron.no

SALES AND TECHNICAL ASSISTANCE SERVICE