

TAMTRON



TAMTRON ONE POWER TRUCK ON-BOARD SCALE

FOR ACCURATE AND RELIABLE WEIGHING AT THE POINT OF COLLECTION

Tamtron One Power Truck On-board Scales are mounted into a vehicle and makes it possible to weigh the load without any interruptions or additional processes. The weighing information can be used as the basis for invoicing as Tamtron One Power Truck On-board Scales are approved for legal for trade. The load cells of the scale are mounted between chassis and body, which makes the weighing solution very robust and capable to withstand the demanding conditions the vehicles are operating in. Modern One Display makes the scale easy to use.

Tamtron One Power Truck On-board Scales are easy to fit and can be installed to any vehicle regardless of make. Once fitted the weighing solution demands very little maintenance.

- ▶ Accurate weighing results, 0.5–2.0 %
- ▶ Approved for commercial use
- ▶ Weighing information can be transferred to a cloud server or, via integration, to an ERP or other system
- ▶ Easy to fit
- ▶ Low maintenance
- ▶ Modern Tamtron One display

TAMTRON ONE POWER TRUCK ON-BOARD IS A MULTI-PURPOSE WEIGHING SOLUTION

The One Power Truck On-board can be used for load weighing in a wide variety of applications. The system can be installed in the bodywork phase on a variety of trucks, trailers and translifters.

Examples of truck use are waste and recycling vehicles and livestock transport. An example of trailer use is translifters, which are used in heavy industry and ports, for example, for weighing steel coils. In addition to these, the One Power Truck On-board is suitable for many other applications.

Several different load cell models are available for the system; 4–6 pcs per installation, suitable for commercial weighing. If the system is used for control weighing, there are even more options available.

In all of these, close cooperation with the bodybuilders and / or frame builders is essential, and the installation of the load cells must be considered at the design stage.

Weighing data for all One Power Truck On-board scales is available in Tamtron's cloud services or can be further integrated into the customer's own systems.

SPECIFICATIONS FOR LEGAL FOR TRADE SCALE

- ▶ **Weight capacities:** 30t
- ▶ **Weighing precision, of maximum capacity*:** $\pm 0.5\%$
- ▶ **Type approved temperature range:** 0–50 °C
- ▶ **Supply voltage:** 12/24V



EASY TO INSTALL

Tamtron One Power Truck On-board scale can be installed when the vehicle is built. One Power Truck On-board solution is designed so that the mounting work is easy.

CAN BE CUSTOMISED

The usual number of load cells needed is 4 to 6, but depending on the vehicle more load cells can be delivered. Tamtron One Power Truck On-board can be customised easily to fit the customer's needs. Tamtron's experts will support in selecting the right load cells and the right number of load cells.

ANGLE COMPENSATED AND EASY TO TARE, ENABLING THE NET WEIGHING

Tamtron One Power Truck On-board scale is angle compensated for accurate weighing even when the conditions for weighing are demanding and surface the vehicle is standing on is not completely flat. Furthermore, the scale is easy to tare which enables customer specific weighing.



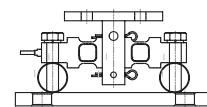
WEIGH WHILE WORKING

APPROVED FOR COMMERCIAL USE

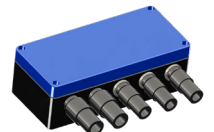
Tamtron One Power Truck On-board scale is designed to meet the high performance and reliability demands of heavy-duty handling. This type-approved scale also meets the requirements of legal for trade regulations.



ONE DISPLAY



4-6 SENSORS
(WHEN 6 SENSORS
THEN CONNECTOR BOX
INCLUDED AS WELL)



DMU WITH CABLES
AND WIRING
HARNESS

OPTION: THERMAL PRINTER



WEIGHING INFORMATION MANAGEMENT

Weighing information collected to the memory of the Tamtron One Power Truck On-board scales can be printed with each weighing or transferred to be utilised for business activities via USB, a cloud service or integration directly to an ERP or other system. With the electronic information transfer, orders can be transmitted directly to the scale and acknowledged as completed via the scale, making it possible to carry out invoicing immediately after the weighing. Optimised loads and information regarding transferred amounts, materials and schedules make business more efficient and bring transparency to the processes, giving tools for optimal profit-making. With the information, work sites can be optimised to be as fluent and efficient as possible and reporting between co-operation partners becomes easier.

SAFER OPERATIONS

The accurate scale improves safety as well, as damage caused by overloading can be avoided and the truck can be loaded accurately without exceeding the allowed weight limits. Safety can also be increased with features such as an immobiliser system or a rear-view camera connected to the scale.

TAMTRON ONE POWER SCALE MODELS

All One Power Truck On-board models save the weighing information to a log memory and important information, such as customers and materials, can be saved into the scale. The basic models One Power 100 and One Power 200 do not come with the electronic information transfer feature, but they can easily be updated to a more advanced One Power model at any time.

TAMTRON ONE DISPLAY SPECIFICATIONS

- ▶ Dimensions 205x144x45 mm w/o mount
- ▶ Weight 1 kg (with mount)
- ▶ Operating Voltage 12/24VDC
- ▶ 7" 800x480 TFT LCD with capacitive touch panel
- ▶ 2xCAN (1xCAN with 12VDC power output)
- ▶ Analog composite video input
- ▶ 1xRS232 for printer with 24VDC power output
- ▶ 2xUSB 2.0
- ▶ 2G/3G/4G mobile data
- ▶ Wi-Fi 802.11b/g
- ▶ Bluetooth 4.1
- ▶ GPS/GLONASS
- ▶ Absolute orientation sensor
- ▶ Internal buzzer
- ▶ Digital I/O (3xDigital in, 1xDigital out, 1xPWM out)
- ▶ IP 67
- ▶ Operating temperature -25 – +50 °C

ONE POWER 100

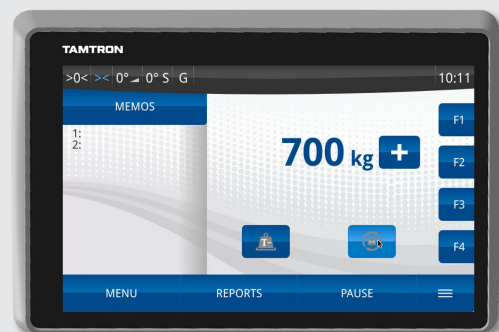
- ▶ Four main memos for saving information
- ▶ 1000 receipts in log memory

ONE POWER 200

- ▶ Eight main memos for saving information
- ▶ 10 000 receipts in log memory

ONE POWER 300i

- ▶ 12 main memos
- ▶ Log memory for 10 000 receipts
- ▶ Internet information transfer



TAMTRON

P.O. Box 15 (Vestonkatu 11)
FI-33561 Tampere
Finland

Tel. +358 3 3143 5000
sales.onboard@tamtron.com

WWW.TAMTRON.COM

Tamtron is a leading supplier of advanced weighing solutions, offering innovative weighing and dosing technologies, comprehensive lifecycle services, and modern cloud-based digital services. Supporting industries such as construction, mining, wood processing, waste management, logistics, and manufacturing, Tamtron operates globally with its headquarters in Finland. The company has a strong presence across Europe through its subsidiaries and worldwide partner network.